

### Features

- Built-in 100v/70v transformer
- In-ceiling type subwoofer
- 6" speaker unit
- Power taps 1.25w-2.5w-5w-10w-20w-40w @100V
- Metal grille, ABS baffle & metal back cover
- Paint in RAL9016 white

### Description

The T-206S is a ceiling subwoofer built-in 70v/100v transformer. The 70v/100v transformer technique reduces line losses on longer distance and allows easy parallel connection of multiple loudspeakers.

The subwoofer works together with the passive loudspeaker like T-206 or T-206CW would be superior union for bar, disco, entertainment & karaoke application where have a strict requirements of bass response.

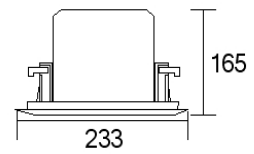
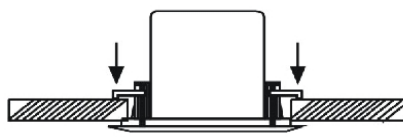
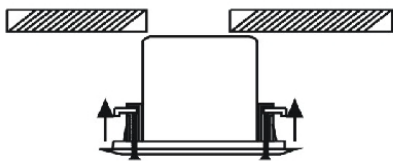
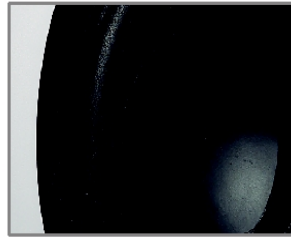
The built-in 6" speaker driver is designed of wide frequency response 80-2kHz, the multiple power taps 1.25W, 2.5W, 5W, 10W, 20W & 40W are helpful for different applications varies from room size and ambient noise surroundings. The metal grille, ABS baffle and metal back cover are painted in attractive RAL9016 white color. Its flush mount type makes the easy and secure installation.



### Specification

Model	T-206S
Power Taps @100V	1.25W, 2.5W, 5W, 10W, 20W, 40W
Power Taps @70V	0.62W, 1.25W, 2.5W, 5W, 10W, 20W
Impedance	Com/8KΩ/4KΩ/2KΩ/1KΩ/500Ω/250Ω
SPL(1W/1M)	88dB
Max.SPL (Rated W/1M)	104dB
Frequency Response (-10dB)	80-2KHz
Finish	Baffle: Steel, White Grille: Steel, White
Speaker Driver	6" x1
Cutout Size	201mm
Dimensions	233 x165mm
Weight	2.8Kg
Mounting	Flush-mount dog ears

### Appearance:



### Frequency Response

