

Features

- Built-in 100v/70v transformer
- Pendant type loudspeaker
- 6" full range speaker driver
- Power taps at 3.75w-7.5w-15w @100V
- Aluminum enclosure & metal grille of white color

Description

The T-200B is a pendant speaker built-in 70v/100v transformer. The 70v/100v transformer technique reduces line losses on longer distance and allows easy parallel connection of multiple loudspeakers.

The built-in 6" full range speaker driver is designed of wide frequency response 150-14kHz, the multiple power taps of 3.75W, 7.5W & 15W could meet different applications varies from room size and ambient noise surroundings.

The aluminum enclosure and metal grille are of white color. Easy and secure wall mount installation through the supplied secured cable tails.

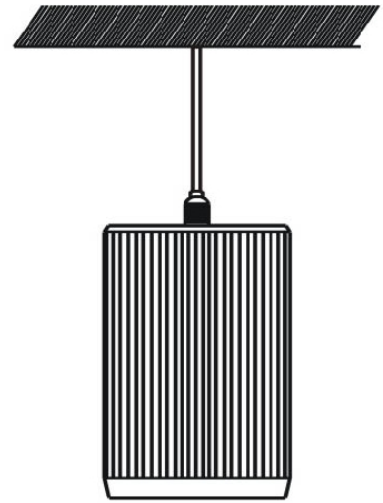
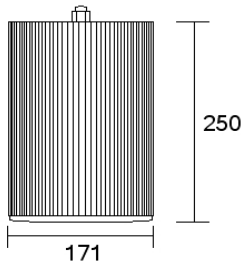
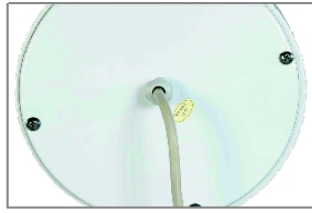
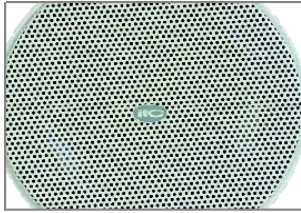
It is ideal choice for industrial and commercial applications in the outdoor area of train station, shopping mall, parking area and factory where background music and paging is needed.



Specification

Model	T-200B
Power Taps @100V	15W, 7.5W, 3.75W
Power Taps @70V	7.5W, 3.75W, 1.85W
Impedance	Blue: Com Yellow: 1.3KΩ Red:670KΩ Green: 2.6KΩ
SPL(1W/1M)	92dB
Max. SPL (Rated W/1M)	104dB
Frequency Response (-10dB)	150—14KHz
Finish	Baffle: Aluminum, White Grille: Aluminum, White
Speaker Driver	6" x1
Dimensions	172x250mm
Weight	2.6Kg
Mounting	With mounting bracket fixed by screw

Appearance:



Frequency Response

